

# Ferrule Grips

## Standard Ferrule Grips



Description	Length	Required Foot
Standard (closed and split)	1"	10ga - 1/2" uses small foot
Long Split	2"	5/8" - 3/4" uses medium foot
Extra Long Split	3"	7/8" - 1" uses large foot

Ferrule grips come in two basic styles closed and split. You can use either to shoot threaded and non threaded studs, but you must use a split ferrule grip if you are welding headed anchors or shear connectors. Long grips are used to access inside angles and hole shooting. Other selections such as ferrule plate, thru deck grip and ferrule tubing are also available.

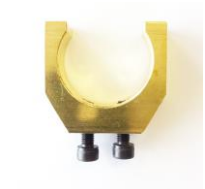
## Ferrule Footplates



Description	Sizes
Footplate for standard gun 2 leg	3/16" - 7/8"
Footplate for standard gun 1 leg	3/16" - 7/8"
Footplate for A-58 Bantam style	1/4" - 7/8"

Ferrule Footplates are used when shooting a short stud and there is not enough room to use a standard foot and ferrule grip set up.

## Thru Deck Grips



Stud Size	Ferrule O.D.
1/2"	.680
5/8"	.815
3/4"	1.06
7/8"	1.24
1"	1.44

Thru Deck Ferrule Grips are used in conjunction with a thru deck extension foot assembly (see arc foot section). This set up is used when welding through corrugated metal decking allowing the stud to be shot into the well of the deck.

## Ferrule Tube and Bushing



Description	Sizes
Ferrule Tube Bushing	10ga - 3/4"
Ferrule Tube Diameter	10ga - 3/4"
Ferrule Tube Length	32", 36" or cut to size



**1-800-458-9353**